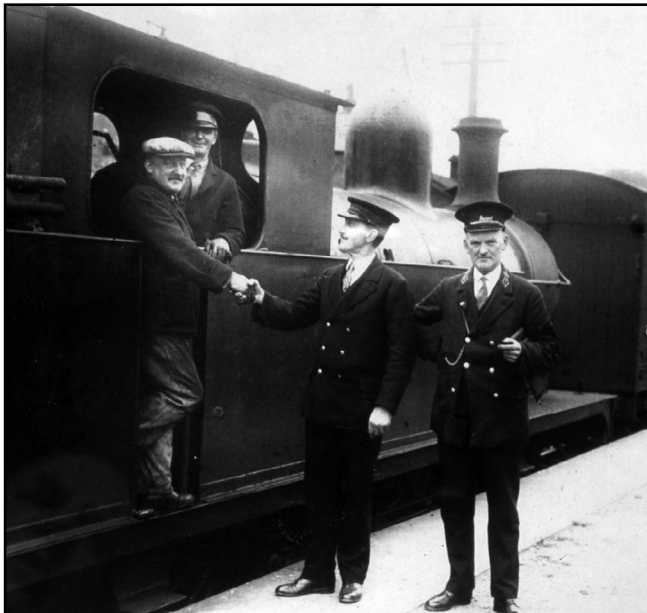


# Heritage Corner..



*Ex L&YR. Aspinall 2-4-2 tank, number 10646 is shown at Grimsargh Station on 31st May 1930, whilst working the last official passenger train. Author's Collection*

## **Grimsargh junction, change here for Whittingham**

The charm of the two rural branch lines once made a significant contribution to the social and economic infrastructure of Ribbleton, Grimsargh and Longridge. Grimsargh has a particularly interesting railway heritage and was once a junction served by two stations on separate lines.

One of the most significant developments for Grimsargh took place on the 1st May, 1840 with the opening of the Preston and Longridge Railway Line which was built to serve the Longridge quarrying industry.

The privately-managed Grimsargh-to-Whittingham Line was constructed during 1887 to connect the huge Whittingham Mental Hospital which had been built in 1870. From inception it carried coal to the hospital's power station and passengers. The Longridge line incorporating Grimsargh Station closed to passengers on the 31st May, 1930 and to freight in November, 1967, whereas the quirky Whittingham line survived until the 29th June, 1957.

### INSIDE THIS ISSUE



# Heritage Corner..

## (Cont'd)



*The end of an era was unceremoniously recorded on the Longridge line on Friday, 2nd August 1968, when Stanier Class Five, No 44874, worked a freight train along the former branch line. David Hindle*



*The quirky Whittingham line is here epitomised with Sentinel 'Gradwell' hauling a train towards Whittingham with only one converted passenger carriage Author's collection*

Originally the locomotion to Longridge was provided by horse power with horses supplied by Mr. Hayes of Riche's Farm, Grimsargh. Villagers along the line cheered the inaugural passenger train drawn by a horse decorated with ribbons. The fare from Preston to the Plough Inn at Grimsargh was 4d. and to Longridge was 6d.

On subsequent occasions the horses jibbed ascending the gradient between Grimsargh and Longridge, and male passengers were requested to push. After being un-yoked from their carriage at Longridge the horses earned a sugar lump and boarded their own special carriage to hitch a lift back to Grimsargh. With the arrival of the first steam engine in 1846 the horses were put out to grass.

In the early C20th there was daily activity in Grimsargh when the level crossing gates on Longsite Lane, (now Preston Road) opened and station master Latham emerged from his office to welcome passengers by bellowing : 'Grimsargh, change here for Whittingham.'

I knew Grimsargh in the early 1950s when Preston Road was obstructed twice a day by the crossing gates next to the Plough Inn.

Close by an antiquated steam engine with three funny green passenger carriages waited for passengers bound for Whittingham. The distance between Grimsargh and Whittingham Stations was almost two miles. Undoubtedly unique, it claimed to be the only free railway in the country. Anyone could travel and as a boy I travelled the line several times just for the fun of it.

On visits to the station I witnessed the strange sight of the Whittingham train arriving and departing. The late shift slammed the doors of the carriages which had been converted from guard's vans by the hospital's joiners. It was a bumpy ride at a speed of around 15 miles per hour and as a boy I was mesmerized by the whole experience including riding past tumbling Lapwings and galloping heifers close to 'Dixon's Farm' and cuttings and embankments gloriously festooned by a colourful mosaic of wild flowers.

At the end of a long curvature of the track the train entered Whittingham Station with opportunities to enjoy watching a game of cricket or to have a walk around the hospital's gardens and lake.

***Do you like our new Heritage Corner? Let us know if you'd like to see more of what makes Grimsargh so special?***

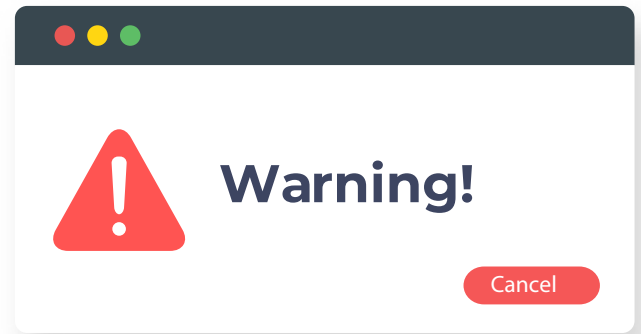
***By David J. Hindle***

# Scams and How to Avoid Them

Many of us are becoming savvy to scams, but the scammers are getting more clever, so it pays to always be on your guard.

## Summary of Key Points:

- Your bank will NEVER ring you and ask for your account details over the phone. Nor will they ask you to transfer money to another account by phone or by email.
- Generally, no legitimate company will phone or email you and ask you to give your account details over the phone or online.
- If you are ever concerned that a phone call is suspect, simply end the call. You can always phone the organisation back – having sourced the correct number for them and preferably from a different phone (see below).
- Be very cautious of anyone asking you to make any transfer of funds. Even if an email appears to be from someone/organisation known to you – people can hack your emails, for example - if you have accidentally installed “malware”.
- Do not click links in emails sent to you or open attachments, unless you are 100% confident of the person who has sent it PLUS you have checked that it has come from their actual email address. Even that cannot be fully secure, as email addresses can be hacked, so if you're not sure, do not click/open.
- Do not accept offers from anyone cold-calling at your door to fix repairs that they say are required to your property.
- If you are on Facebook, follow one of the scam alert pages, such as:
  - **Action Fraud** – might have had some bad press recently for not pursuing fraud cases, but their Facebook Page provides regular useful updates on latest scams and ways to stay safe
  - **That's Nonsense** – gives a little humour while also highlighting scams and “Fake News”
- If in doubt – ask someone you know and trust for advice before doing anything, clicking anything or committing to anything.



## BANK SCAMS

Someone may call claiming to be from your bank telling you there's a problem with your card or account. The caller will often sound professional and try to convince you that your card has been cloned or that your money is at risk.

They may ask for your account and card details, including your PIN number, and even offer to send a courier to collect your card. They may also advise transferring your money to a 'safe account' to protect it. This is a common scam and your bank would never ask you to do this.

## COMPUTER REPAIR SCAMS

A scammer may call you claiming to be from the helpdesk of a well-known IT firm, such as Microsoft. They'll tell you that your computer has a virus and will ask you to download 'anti-virus software', possibly at a cost. This turns out to be spyware, used to get your personal details. Legitimate IT companies don't contact customers this way.

## COMPENSATION CALLS

This is a call from a company asking about a car accident you've supposedly had claiming you may be entitled to compensation. Some of these could be genuine companies looking for business but others are scammers. Don't engage in these calls. If you've had an accident, call your own insurance company on the phone number provided on your policy.

## HMRC SCAMS

You may get a call from someone claiming to be from HMRC saying there is an issue with your tax refund or an unpaid tax bill. They may leave a message and ask you to call back. Again, don't be fooled by this. HMRC would never contact you this way and would never ask you to reveal personal financial information such as your bank account details.

## PENSIONS & INVESTMENT SCAMS

This is a call about an ‘unmissable’ investment opportunity, or offering you the opportunity to access your pension cash earlier. Nuisance calls about pensions are now illegal. If you receive a cold call about your pension, report it to the Information Commissioner’s Office on 0303 123 1113 or go online:

<https://ico.org.uk/make-a-complaint/nuisance-calls-and-messages/>

## EMAIL AND TEXT SCAMS

Emails often look like they have come from a genuine source – identical to other emails received or cloning all the trademarks of the organisation they purport to be from. Be extremely cautious when clicking any links or opening any attachments. If you have any cause to doubt the source, check the email address that it came from and compare it against the “domain name” for the organisation in question.

Anything that says you’ve won something is pretty well 100% likely to be a scam. If it sounds too good to be true, it most probably is. Don’t click anything in such emails or texts.

## REPORTING SCAMS

We all have a role to play in making life more difficult for the scammer. Any time someone tries to scam you – report it. Citizen’s Advice offer a comprehensive guide on reporting scams, which you can read here:

<https://www.citizensadvice.org.uk/consumer/scams/reporting-a-scam/>



## REMEMBRANCE SUNDAY 2019

The annual service was held on Sunday 10 November followed by a wreath laying ceremony at our War Memorial led by Rev. Neil Salt and Father Doyle. As always, it was wonderful to see such a good turn out from the community for what is always a very moving ceremony.

## WELCOME TO OUR NEW PARISH COUNCILLOR – MARK BELL



I’ve lived in the village since 2012, when my wife Nicola and I moved onto The Hills Estate. Since that time we’ve had three beautiful children, one of which now attends Grimsargh St Michaels School.

During the day I am a Professional Engineer for a large aerospace multinational, having performed a variety of roles in both Engineering, Resource Management and Project Management.

Over the last few years Nicola and I have become more involved in village matters, wanting to put something back in the community. In 2018 I became a member of the Field Day Committee and enjoy being part of the team that organises the village’s premier event of the year. I have recently been elected to the Parish Council and I’m ready to serve our community, where I hope to bring a rational and objective approach to village matters, also bringing a fresh pair of (slightly) younger eyes to ensure all our children and residents can enjoy a safe and prosperous village.

*In my spare time I enjoy rock and indie music, craft and cask beer and I’m a lifelong supporter of Newcastle United.*

# Grimsargh Dog Walks



**D**id you know there is now an informal group that organises monthly Dog Walks around Grimsargh? These take place on the first Sunday of every month, starting at 11am from The Plough car park.

The walk is fairly gentle – typically around 2-3 miles on lanes and across fields, though sometimes a little longer – depending on what folk are up for! It is not an “organised” walk as such (no official leader), but was the idea of Constantinos Theophanous, who moved to Grimsargh relatively recently and brought the idea with him. It is a lovely opportunity for dogs to socialise and run around together, while their owners chat and generally all have a lot of fun. Some stay on for lunch or just a drink at The Plough afterwards, where dogs are welcome in the bar area.

**To find out more, go and see their Facebook Page: <https://www.facebook.com/grimsarghdogwalk/> where you'll see lots more photos of adorable dogs.**



## PLANNING UPDATE DECEMBER 2019

**W**e've had notice of two major planning applications getting to “reserved matters stage” - meaning they're going ahead, but we were being invited to comment on the finer details.

The first is the Applethwaite Older Persons Village, off Preston Road. We have made comments regarding the layout of the bungalows, the design and height of the apartment block, and the design of the care home, together with the indicated loss of trees on the periphery, and the inadequacy of the parking facilities for the apartments and care home.

The second is the Seddon Homes development off Whittingham Lane. This has reduced from 70 to 66 homes, and we were pleased to see that following our objections at outline stage, the number of 4 and 5 bed homes has reduced and the number of 3 and 2 bed homes has increased.

There is also an affordable homes scheme which will be run by a separate association, and will offer affordable homes to rent. We asked for smaller, more affordable homes and someone has actually listened!

The third application is a full proposal and this is for a 30 bed specialist dementia unit adjoining the Older Persons Village. Whilst we welcome such a facility in the village we have made comments about the design and height of the building in relation to the road view and again, the inadequacy of the parking.

We have also established a constructive dialogue with the site manager of the Story Homes development at Elston Park, Jamie Davies, which is already proving productive. He will give us as much notice as possible about any forthcoming roadworks, which we will post on our Facebook page.

# Village Planter Awards 2019



*Nellie and her grandson James with the winner's shield.*

On 22nd September we had a lovely afternoon where the winners of the 2019 Grimsargh Planter Competition were presented with their awards by our independent judge Michelle Unsworth, of So Plants Garden Centre.

All those residents who maintain the planters around the village were invited to tea and cake at Little Town Dairy as a small token of our thanks for their efforts in keeping the village looking so colourful. As well as a gift from the Parish Council all winners receive a gift voucher from Michelle, who also supplies the plants for the planter at The Hills, maintained by Tracey and Katie, aka The Land Girls, a local gardening firm.

This year's winner – for the third year running - was Nellie Cowell who looks after the War Memorial. Second was Grimsargh Gardening Club for their planter at the north entrance to the village, and third Eileen Murray for her planter on Preston Road, near the church.

Special thanks go to Grimsargh Pre-School, who after many years have closed down following the retirement of Lesley Brooks. I'm sure we all wish Lesley a great

retirement; so many of the children and young people in the village will look back on happy days with the Aunties in the Village Hall. Pre-School looked after the planter at the right hand side of the entrance to the Village Hall and this is now available for adoption, so please give us a ring on 01772654983 or email [all@grimsarghparishcouncil.org](mailto:all@grimsarghparishcouncil.org) if you'd like to help keep the village looking bright and beautiful!



*Members of Grimsargh Gardening Club, Grimsargh Cricket Club, Grimsargh Players, Nellie and James Cowell and Eileen Murray enjoy cake and coffee as Michelle announces the winners.*

# Spotlight



Thank you to **Mark Ashmore** for this fabulous picture of Grimsargh using a drone.



Village Superheroes **Charlie Biggs** (5) **Alex Jacques** (7), **Jenson Pickard** (7), and **Sophie Jacques** (3) litter picking under Skew Bridge on their way home from school.

*Well done!*

# The Hills WhatsApp

During the last year, there have been a couple of examples of residents doing estate maintenance on The Hills. An idea has been proposed that a WhatsApp help group be set up, where time or equipment can be shared be set up. This could be for either an estate maintenance issue, like the residents who trimmed back the bushes at the entrance, or a personal issue where someone may need 10 minutes help to move a wardrobe.

This proposal is initially just for The Hills, however if successful can be extended to different parts of the village.

If you wish to register your interest in this proposal, please email Peter Burton at [peter.burton@grimsarghparishcouncil.org](mailto:peter.burton@grimsarghparishcouncil.org)



# Football For The Future



The football pitch on the Village Green had a new drainage system installed over the summer, was reseeded and should be ready for play soon. We are still in the process of agreeing a licence with Preston City Council, but we have already had a few approaches about future use.

To be equitable, we are asking all those who may be interested in using the pitch, running a team or teams, to contact our Clerk, Sue Whittam, by email at [clerkgrimsarghparishcouncil@gmail.com](mailto:clerkgrimsarghparishcouncil@gmail.com) before 31st January.

Early next year we will invite all those interested to put their proposals forward – having fought long and hard to get this far, it's important to us that we put this to best use for our community.

# New To The Village?

We love to welcome new residents to our village. We deliver a welcome pack with introductory letter, previous newsletters, a Heritage Walk map, and information about our village hall, farmers market, and some of the community groups. If you are new, or have new neighbours, let us know by email at [welcome@grimsarghparishcouncil.org](mailto:welcome@grimsarghparishcouncil.org) or send us a message on our Facebook page.



# In Case You Missed It!



We know not everyone follows us on social media so here are a few of the 'latest news' posts from our Facebook page;

**Kerbside recycling** by Preston City Council now includes many plastic containers that were previously not eligible for collection, such as yoghurt pots, plant pots and food containers. You should have had a sticker placed on your grey bin, but if in doubt, check with Preston City Council's website, or ask a neighbour. Always ensure they are rinsed carefully.

**Longridge Recycling Centre** - revised opening hours are Wednesday to Sunday, 9am to 5pm, all year round.

**Berry Lane Medical Centre** has announced major expansion plans, adding new consulting and treatment rooms and additional office space. Building commences 11th November. Further details are available in their reception area.

Our **Farmers Market** team are seeking a volunteer to co-ordinate the monthly stalls. This is a great opportunity for someone to gain experience, whilst working with a professional yet friendly group of folk. For more details, contact Eileen Murray on [chair@gvca.co.uk](mailto:chair@gvca.co.uk)

And finally...

**Post Office** – watch out for exciting news of part time postal facilities becoming available in Grimsargh Club, as part of Longridge Post Office's outreach scheme.

# Carols around the Crib....



This year to celebrate our beautiful village and our fantastic sense of community let's make our Carols around the Crib event a special occasion. The event will start at 6.15pm on Friday 13 December outside Grimsargh Club and as usual there will be a lovely selection of Carols and readings....and a mince pie or two! Everyone is welcome to attend so please come along.

# Local Grants Available!



Did you know that Grimsargh Parish Council gives small grants to support worthy causes in the Parish? We are always pleased to hear from local groups that benefit the residents of Grimsargh and we will try and help where we can. If you would like to apply for a grant you can either write or e mail the Clerk, Sue Whittam, or alternatively you can download our small grants guidelines and the application form direct from our website at [www.grimsarghparishcouncil.org](http://www.grimsarghparishcouncil.org) this process. For more information on the Grimsargh Neighbourhood Plan go to the dedicated website: [www.grimsarghneighbourhoodplan.org](http://www.grimsarghneighbourhoodplan.org) where we post relevant documents, or follow our Facebook Page: [www.facebook.com/grimsarghneighbourhoodplan/](https://www.facebook.com/grimsarghneighbourhoodplan/)

# Grimsargh Neighbourhood Plan



**W**e have had a hiatus as we awaited progress on the review of the Central Lancashire Strategic Plan, which involves Preston City Council working in partnership with South Ribble and Chorley Borough Councils. We have also needed to appoint new Planning Consultants due to the serious illness of our previous Consultant. Our new consultants are Fitzgerald Planning, who have considerable experience in guiding Neighbourhood Plans, in Lancashire and elsewhere. We were successful in applying for a new government grant to cover the costs.

The National and Local Policy Assessment to use as our basis has now been completed. Next we will begin to develop our own policies for the initial draft plan.

If we succeed in achieving adoption of our Neighbourhood Plan, it will become part of the Local Planning Policy documentation. It will help in decision making both for future planning processes and help to steer the future actions of your Parish Council.

## **Your Village, Your Future – get involved!**

We are always looking for residents/people in local business to join our Steering Group so please get in touch if you are interested in helping shape the future of the Village. It's really important that the policies come from the community via the Steering Group; not from the Planners. The original questionnaires that you completed will also inform this process.

For more information on the Grimsargh Neighbourhood Plan go to the dedicated website: [www.grimsarghneighbourhoodplan.org](http://www.grimsarghneighbourhoodplan.org) where we post relevant documents, or follow our Facebook Page: [www.facebook.com/grimsarghneighbourhoodplan/](https://www.facebook.com/grimsarghneighbourhoodplan/)

# Young Persons Working Group



**Y**oung people use our public spaces just as much as anyone else, if not more. However, too often young people have not been typically included in the process of imagining and shaping our public spaces. This can often lead to groups of young people being classified as “loiterers.” This can create a negative image for young people and just contributes to the stigma surrounding them. Studies have shown that by being actively engaged in youth-friendly spaces, young people can feel like they have investment in their community and they can develop a strong sense of ownership in these places.

Historically, our parks and public spaces have been built with small children and adults in mind, with an emphasis on playgrounds for the children and benches for the adults watching them.

The Parish Council recognises there is a gap in the provision of public spaces and amenities for young people and we are committed to setting up a Young Persons Working Group next year to investigate what we can do to make our village more “Young Person Friendly”.

However, we can’t do this alone. The Parish Council has ideas of what may be required, from facilities on our village green to better use of the village hall, but these ideas will be naturally biased by our own experiences and we recognise that since a lot of us were young people, technologies, tastes and trends have changed.

Therefore, we are looking for young people to get involved and help shape our village. If you are a young person and would like to get involved, please contact [mark.bell@grimsarghparishcouncil.org](mailto:mark.bell@grimsarghparishcouncil.org)



## PARISH COUNCIL MEETINGS 2020

These are our draft dates for 2020. Meetings are usually held on the first Thursday of each month. We meet in the village hall and start at 7.30 pm. Everyone is welcome to attend.

**Thursday 9 January 2020**

\*(note change of date)

**Thursday 6 February 2020**

**Thursday 5 March 2020**

**Thursday 2 April 2020**

**Thursday 14 May 2020**

\*(note change of date due to Elections)

**Thursday 4 June 2020**

**Thursday 2 July 2020**

**Thursday 3 September 2020**

**Thursday 1 October 2020**

**Thursday 5 November 2020**

**Thursday 3 December 2020**

## CONTACT DETAILS

Councillor Peter Burton - 01772 797565  
[peterh.burton@grimsarghparishcouncil.org](mailto:peterh.burton@grimsarghparishcouncil.org)

Councillor Mrs Joyce Chessell - 01772 653751  
[joyce.chessell@grimsarghparishcouncil.org](mailto:joyce.chessell@grimsarghparishcouncil.org)

Councillor Mrs Lynda Cryer - 01772 794862  
[lynda.cryer@grimsarghparishcouncil.org](mailto:lynda.cryer@grimsarghparishcouncil.org)

Councillor Terry Cryer – 01772 794862  
[terry.cryer@grimsarghparishcouncil.org](mailto:terry.cryer@grimsarghparishcouncil.org)

Councillor David Hindle - 01772 652090  
[david.hindle@grimsarghparishcouncil.org](mailto:david.hindle@grimsarghparishcouncil.org)

Councillor Ian Liptrot – 01772 703541  
[ian.liptrot@grimsarghparishcouncil.org](mailto:ian.liptrot@grimsarghparishcouncil.org)

Councillor Mrs Eileen Murray - 01772 655812  
[eileen.murray@grimsarghparishcouncil.org](mailto:eileen.murray@grimsarghparishcouncil.org)

Councillor Mark Bell – 07887 523552  
[mark.bell@grimsarghparishcouncil.org](mailto:mark.bell@grimsarghparishcouncil.org)

Councillor Mrs Lindsay Philipson – 01772 654983  
[lindsay.philipson@grimsarghparishcouncil.org](mailto:lindsay.philipson@grimsarghparishcouncil.org)

-----  
Clerk to the Council:  
Mrs Sue Whittam  
3 Hazelmere Road  
Fulwood  
Preston  
PR2 9UN  
01772 863477  
[clerkgrimsarghparishcouncil@gmail.com](mailto:clerkgrimsarghparishcouncil@gmail.com)

To send an email to all of us  
use: [all@grimsarghparishcouncil.org](mailto:all@grimsarghparishcouncil.org)

**Find us on Facebook: Grimsargh Parish Council**

*Wishing you all a very Happy Christmas and a peaceful New Year*